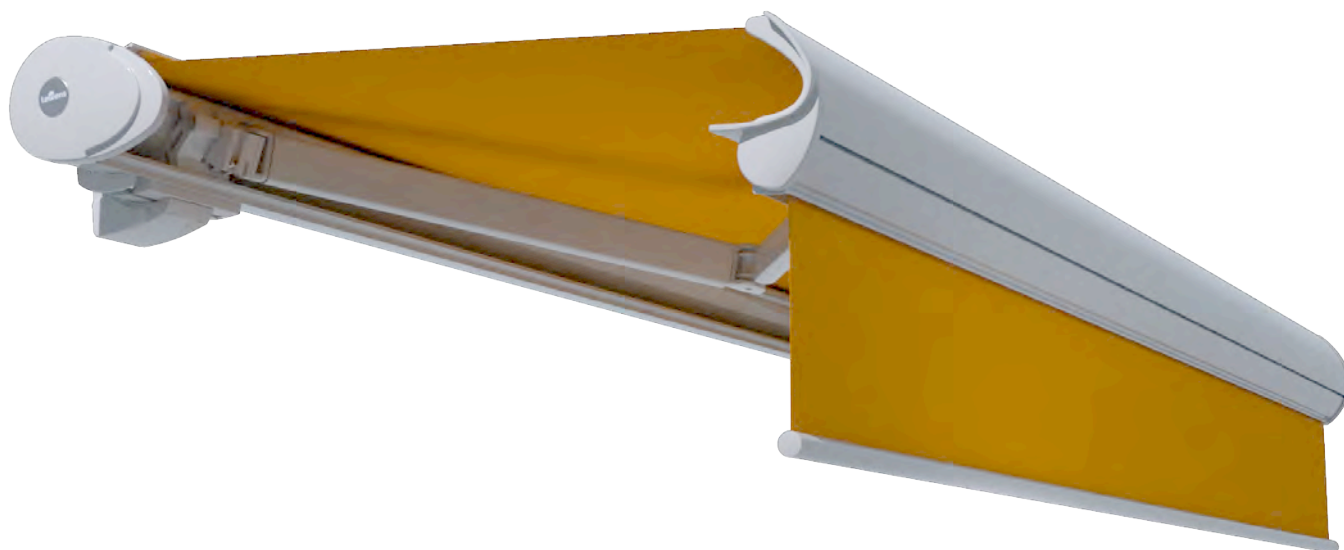


# Replacing the motor on the Vario valance

## Toscana Grande



### Important safety instruction!



To ensure the safety of persons it is important to read these instructions carefully prior to installation and to follow them. The installation instructions should be kept in a safe place and if the awning is sold they must be passed on to the new owner.

## Table of content

1.	Instandsetzungsarbeiten	2
1.1.	Motorwechsel im Vario Volant	2
1.1.1.	Demontieren des Vario Volants	2
1.1.2.	Austausch des Antriebes	3
1.1.3.	Montage des Vario Volants	3

## Repair

### 1. Repair



**Please note:** Repairs may only be carried out by a specialist company. Only spare parts from Lewens Sonnenschutz GmbH may be used.



It is recommended that at least two persons carry out installation.

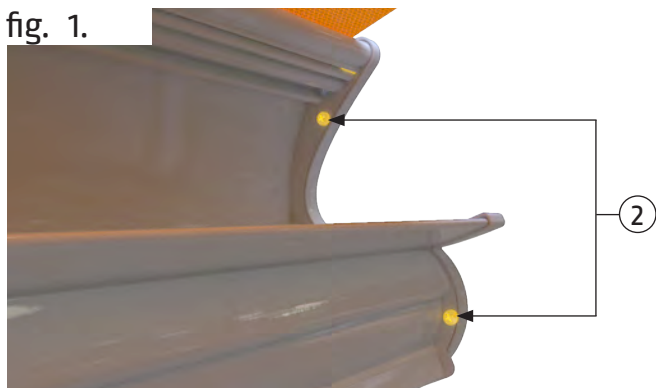


**Please note:** The awning must be dismantled for this purpose. The motor must be replaced by a specialist company, or the awning returned to the manufacturer for this.

#### 1.1. Motor replacement

##### 1.1.1. Dismantling the Vario valance

fig. 1.



Unscrew the tapping screws [2] of the cover caps on both sides of the front profile on the inside.

fig. 2.



The plug is located in the profile chamber.

Remove the plug from the profile chamber.

fig. 3.



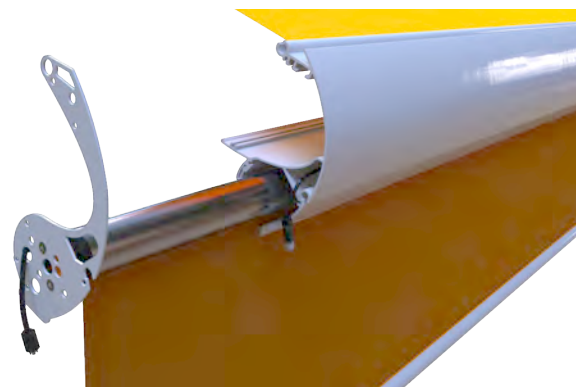
Disconnect the motor cable from the circular connector.

fig. 4.



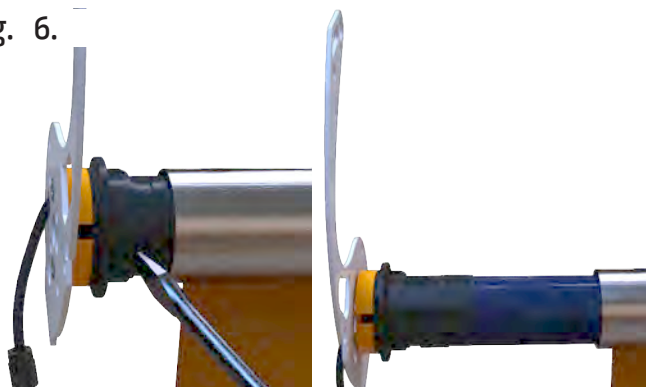
Release the side plate.

fig. 5.



Remove the side plate together with the motor and roller tube laterally from the front profile.

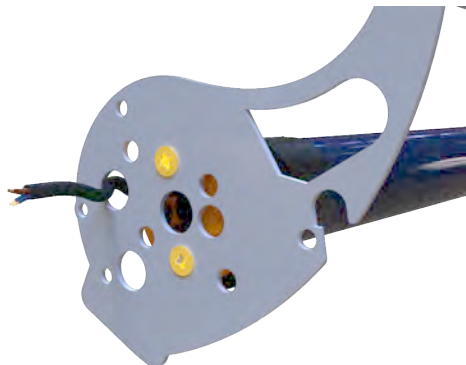
fig. 6.



Take the motor out of the roller tube, if necessary with the aid of a screwdriver.

## 11.2. Replacing the motor

fig. 7.



Remove the side plate from the motor.

fig. 8.



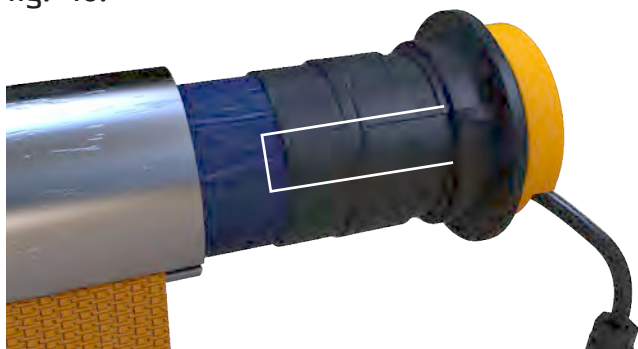
Remove the adapter from the new motor.

fig. 9.



Remove the barbs from the end of the motor.

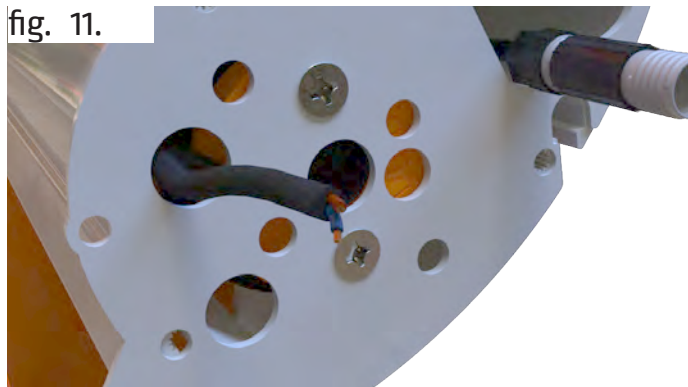
fig. 10.



Pay attention to the slot and insert the motor completely into the roller tube.

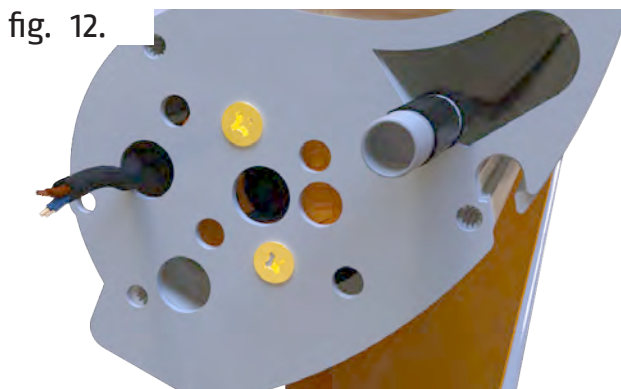
## 11.3. Fitting the Vario valance

fig. 11.



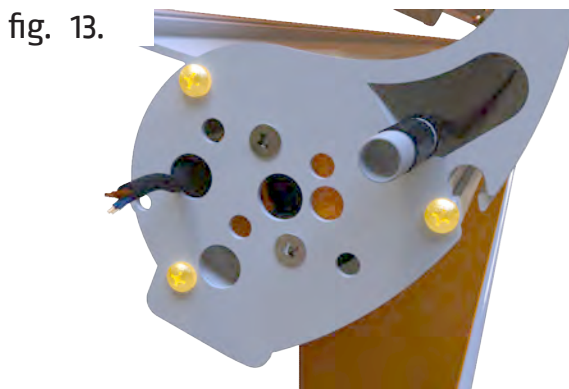
Route the cable of the motor through the side plate

fig. 12.



Attach the side plate to the new motor.

fig. 13.



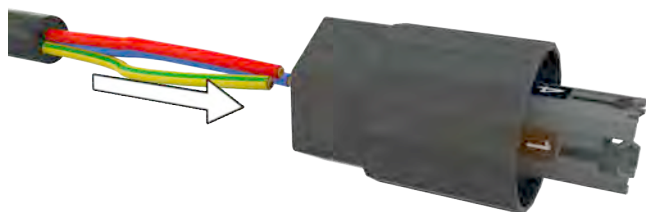
Attach the side plate by using the screws removed earlier.

fig. 14.



fit the circular connector to the cable of the motor.

fig. 15.



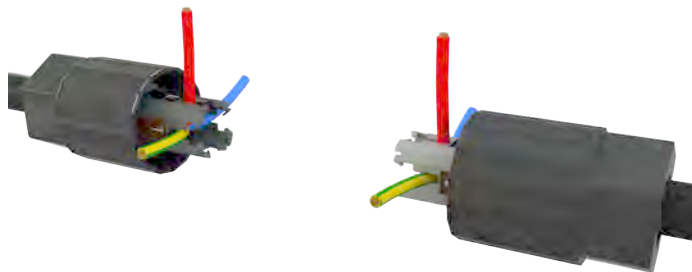
To do so, thread the cable through the circular connector.

fig. 16.



Fold the ends over.

fig. 17.

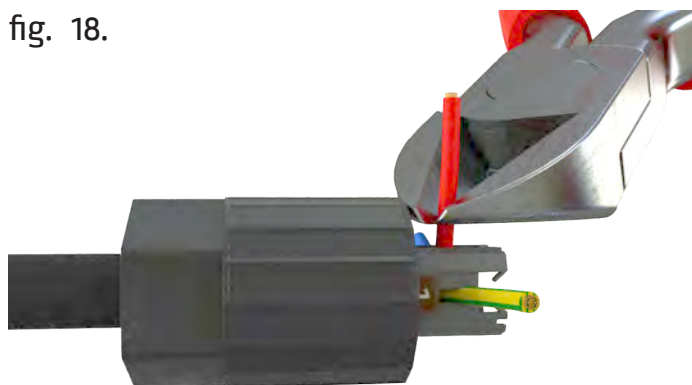


Ensure the same cables are assigned to the same numbers as at the other end.



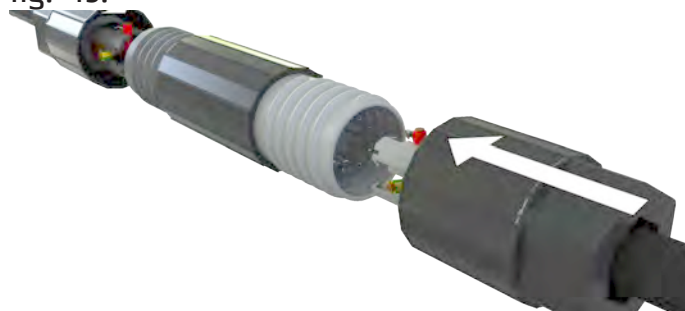
**Caution! Note the numbers!**

fig. 18.



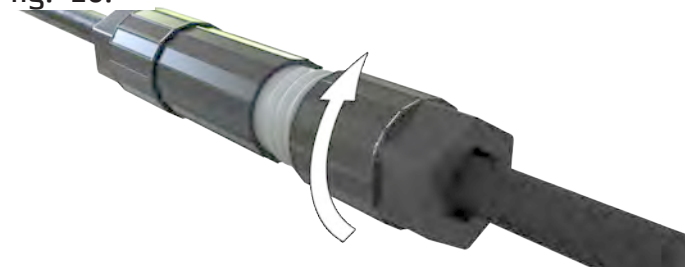
Cut the contacts as close to the casing as possible.

fig. 19.



Fit the connector...

fig. 20.



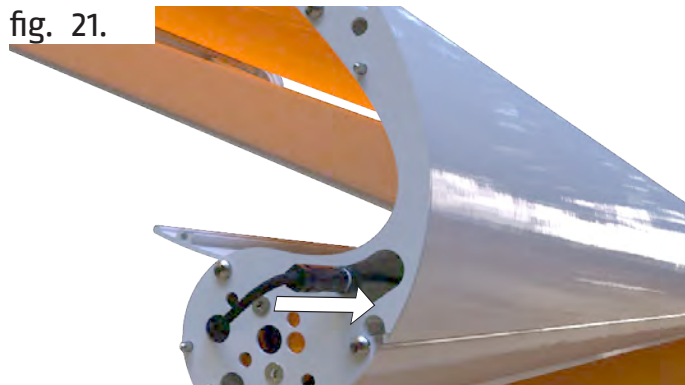
and tighten it.



**Caution! The plug only fits in one position.**

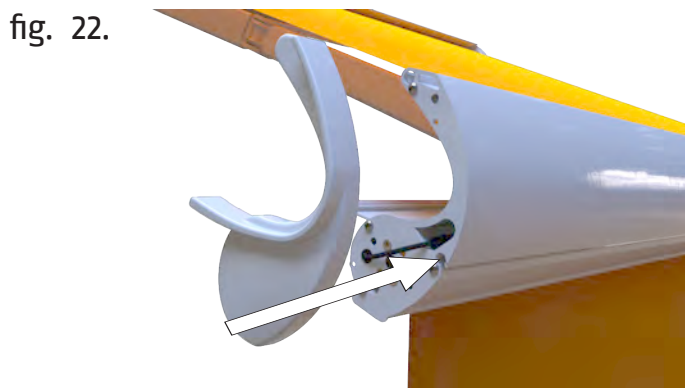
**Do not force it in!**

fig. 21.



Stow the connection in the profile chamber.

fig. 22.



Fit the cover caps for the front profile.